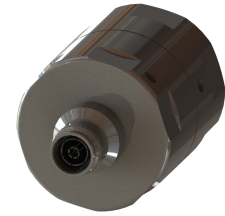




OMNI FIT™ high performance connectors are designed for use with both CELLFLEX® (copper) and CELLFLEX® Lite (aluminium) cables. They are designed specifically to provide the highest quality connector-cable interface while simplifying and speeding up connector attachment. All RFS connectors are fully tested for mechanical and electrical compliance to industry specifications. The 4.3-10 connector is an innovative, space-saving RF connection meeting all requirements even under the most severe environmental conditions and not relying on coupling nut torque. Sealing against outer conductor and jacket by means of the o-ring and 360° compression fit. Multifunctional, self-lubricating HighTech polymer assembly locks on cable corrugation, avoids electrochemical potential differences and compression-fits to the jacket.



FEATURES / BENEFITS

- Ultra high PIM performance i.e. reduced interference leading to high customer satisfaction
- Two-piece design i.e. visual inspection of interlocking leads to improved installation security
- OMNI FIT™ concept i.e. streamlined order management and reduced stock level
- Watertight sealing in mated and unmated condition, i.e. reduced efforts during installation and improved security during operation
- Tri metal alloy plating i.e. extreme resistance against corrosion even under hardest climatic and environmental circumstances
- Multi-thread (Tristart) design i.e. simplified and accelerated tightening process
- RoHS (EU) and CRoHS (China) compliant i.e. can be used on a global basis

[External Document Links](#)

[Notes](#)

[Installation Instruction](#)

Technical features

GENERAL SPECIFICATIONS

Transmission Line Type		Coaxial Cable	
Cable Size		1 5/8	
Cable Type		Foam Dielectric	Radiating
Model Series		LCF158-50A-Series	LCF158-50L-Series
Connector Interface		4.3-10	
Connector Type		OMNI FIT™ PREMIUM Straight	
Sealing Method		O-ring	
Gender		Female	

ELECTRICAL SPECIFICATIONS

Nominal Impedance, ohms	Ohm	50
3rd Order IM Product @ 2x20 Watts	dBc	-163 ; typical -167
Maximum Frequency	GHz	2.75
VSWR, Return Loss	VSWR (dB)	0 < f ≤ 1.0 GHz: 1.02 (40) 1.0 < f ≤ 2.2 GHz: 1.03 (37) 2.2 < f ≤ 2.75 GHz: 1.06 (31)



43F-LCF158-E01

4.3-10 Female Connector for 1-5/8" Coaxial Cable, OMNI FIT™ , O-ring sealing

MECHANICAL SPECIFICATIONS

Plating Outer/Inner		Trimetal/Silver
Length	mm (in)	95.4 (3.756)
Outer Diameter	mm (in)	62.8 (2.472)
Inner Contact Attachment		Spring Finger
Outer Contact Attachment		Spring Claw

ACCESSORIES

Wrench size front	mm (in)	60
Wrench size rear	mm (in)	60
Poly Hook Spanner	mm (in)	PHS 60-90-5 Ø 60-90 (2.3-3.5) Pin 5 (0.2)

TESTING AND ENVIRONMENTAL

Waterproof Level		IP68
------------------	--	------

