

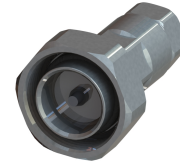


**716M-SCF14-E01**

7-16 DIN Male Connector for 1/4" Coaxial Cable, OMNI FIT™ Premium, Straight, O-Ring and 360° compression sealing

OMNI FIT™ high performance connectors are designed for use with both CELLFLEX® (copper) and CELLFLEX® Lite (aluminium) cables. They are designed specifically to provide the highest quality connector-cable interface while simplifying and speeding up connector attachment. All RFS connectors are fully tested for mechanical and electrical compliance to industry specifications.

The 7-16 connector is the most rugged RF connection meeting all requirements even under the most severe environmental conditions. Sealing against outer conductor and jacket by means of o-ring and 360° compression fit.



**FEATURES / BENEFITS**

- Ultra high PIM performance i.e. reduced interference leading to high customer satisfaction
- Two-piece design i.e. visual inspection of interlocking leads to improved installation security
- OMNI FIT™ concept i.e. streamlined order management and reduced stock level
- Watertight sealing in mated and unmated condition, i.e. reduced efforts during installation and improved security during operation
- Tri metal alloy plating i.e. extreme resistance against corrosion even under hardest climatic and environmental circumstances
- Multi-thread (Tristart) design i.e. simplified and accelerated tightening process
- RoHS (EU) and CRoHS (China) compliant i.e. can be used on a global basis

[External Document Links](#)

[Notes](#)

[Installation Instruction](#)

**Technical features**

**GENERAL SPECIFICATIONS**

<b>Transmission Line Type</b>		Coaxial Cable
<b>Cable Size</b>		1/4
<b>Cable Type</b>		Foam Dielectric Superflexible
<b>Model Series</b>		SCF14-50 Series
<b>Connector Interface</b>		7-16 DIN
<b>Connector Type</b>		OMNI FIT™ PREMIUM Straight
<b>Sealing Method</b>		O-ring + 360° Compression
<b>Gender</b>		Male

**ELECTRICAL SPECIFICATIONS**

<b>Nominal Impedance, ohms</b>	Ohm	50
<b>3rd Order IM Product @ 2x20 Watts</b>	dBc	-163 ; typical -167
<b>Maximum Frequency</b>	GHz	6
<b>VSWR, Return Loss</b>	VSWR (dB)	0 &lt; f ≤ 1.0 GHz: 1.03 (37) 1.0 &lt; f ≤ 2.2 GHz: 1.06 (31) 2.2 &lt; f ≤ 2.7 GHz: 1.08 (28) 2.7 &lt; f ≤ 3.8 GHz: 1.12 (25) 3.8 &lt; f ≤ 5.0 GHz: 1.17 (22) 5.0 &lt; f ≤ 6.0 GHz: 1.22 (20)

**716M-SCF14-E01**

7-16 DIN Male Connector for 1/4" Coaxial Cable, OMNI FIT™ Premium,  
Straight, O-Ring and 360° compression sealing

**MECHANICAL SPECIFICATIONS**

<b>Plating Outer/Inner</b>		Tri metal alloy / Silver
<b>Length</b>	mm (in)	55 (2.165)
<b>Outer Diameter</b>	mm (in)	20 (0.787)
<b>Inner Contact Attachment</b>		Spring Finger
<b>Outer Contact Attachment</b>		360° clamping

**ACCESSORIES**

<b>Wrench size front</b>	mm (in)	32 / 18
<b>Wrench size rear</b>	mm (in)	18
<b>Trimming Tool</b>		TRIM-SCF14-D01-A

**TESTING AND ENVIRONMENTAL**

<b>Waterproof Level</b>		IP68
-------------------------	--	------

